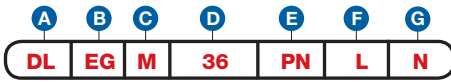


**Item Number**

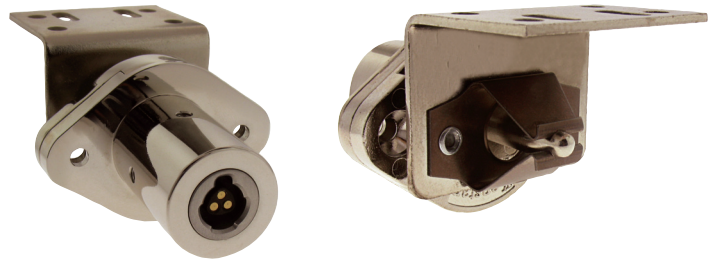
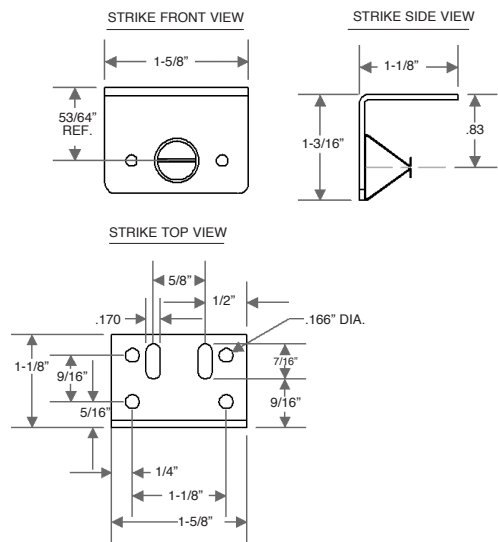
To determine your item number enter the **RED** option code for each section as in the example below.



- A Lock Style**  
**DL** Drawer/Door Lock
- B Core Type**  
**EG** Electronic Medeco® XT
- C Housing Length**  
**M** 1-1/4"
- D Bolt Type**  
**SNAP BOLT**  
**36** 3/4"
- E Plating Finish**  
Extended lead-time and plating lot charges may apply to Special and Custom finishes.
 

Special Finish	<b>PN</b>	Polished Nickel
	<b>SN</b>	Satin Nickel
	<b>PB</b>	Polished Brass
	<b>SB</b>	Satin Brass
	<b>BL</b>	Matte Black
	<b>ST</b>	Statuary Bronze
<b>CF</b>	Custom Finish	
- F Handing**
  - V** Vertical
  - I** Inverted
  - L** Left
  - R** Right
- G Key Retaining**  
**N** No

**Note:** Keys are not included with this lock. See page EG 9 to order keys.



All dimensions shown are in the locked position.

