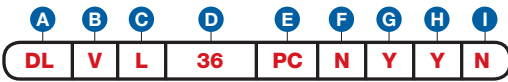
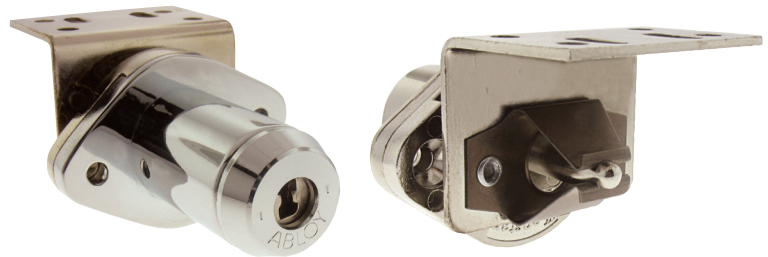


Item Number

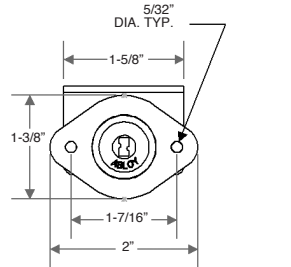
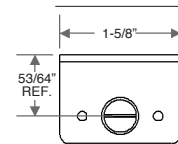
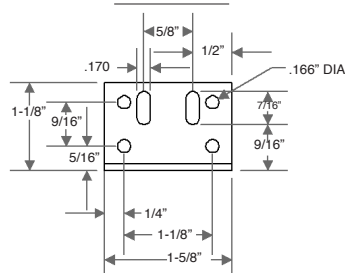
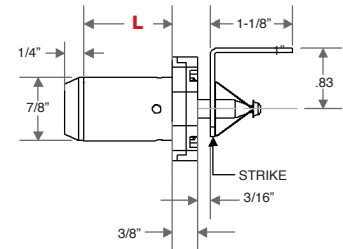
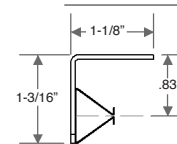
 To determine your item number enter the **RED** option code for each section as in the example below.


- | | | |
|----------------|--|--------------------|
| A | Lock Style | |
| | DL | Drawer/Door Lock |
| B | Core Type | |
| | V | ABLOY® EXEC |
| | V3 | ABLOY® SENTRY |
| | V4 | ABLOY® PROTEC |
| C | Housing Length | |
| | L | 1-3/16" |
| D | Bolt Type | |
| | SNAP BOLT | |
| | 36 | 3/4" |
| E | Plating Finish | |
| | Extended lead-time and plating lot charges may apply to Special and Custom finishes. | |
| Special Finish | PC | Polished Chrome |
| | SC | Satin Chrome |
| | PB | Polished Brass |
| | BL | Matte Black |
| | ST | Statuary Bronze |
| | CF | Custom Finish |
| F | Key Retaining | |
| | N | No |
| G | Keyed Different | |
| | N | No |
| | Y | Yes |
| H | Stamp Lock | |
| | N | No |
| | Y | Yes |
| I | Master Keyed | |
| | N | No |
| | Y | Yes |
| | G | Grand Master |
| | GA | Great Grand Master |



Pat. Pending

All dimensions shown are in the locked position.

D SNAP BOLT

STRIKE FRONT VIEW

STRIKE TOP VIEW

C HOUSING LENGTH

STRIKE SIDE VIEW

ISOMETRIC VIEW
