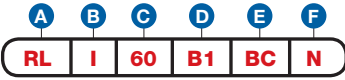


Price List and Data Sheet

Item Number

To determine your item number enter the **RED** option code for each section as in the example below.



A Lock Style
RL Ratchet Lock

B Core Type*
I I.C. Core

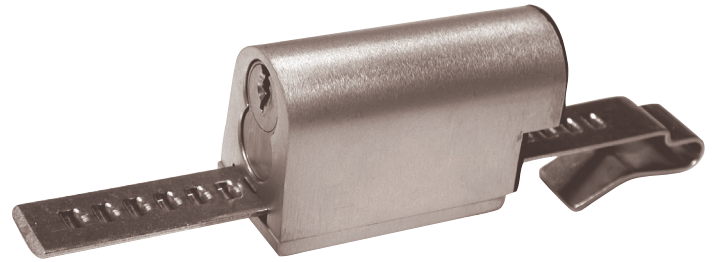
C Housing Style
60 Ratchet

D Bar Type
B1 Standard
B2 Adjustable

E Plating Finish
BC Brushed Chrome
CF Custom Finish

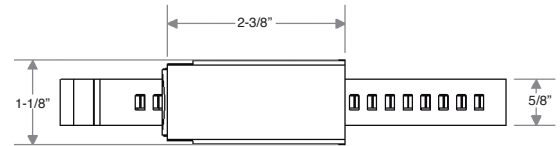
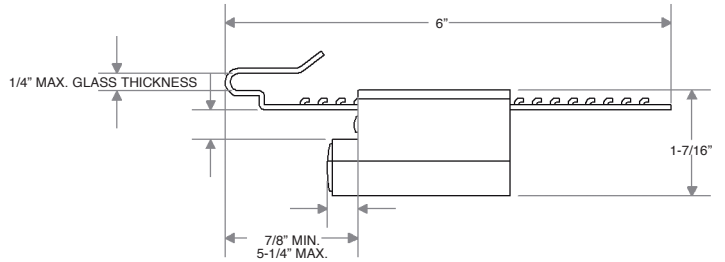
F Key Retaining
N No

*Cores are not included with this lock. See page I14 to order cores.



All dimensions shown are in the locked position.

D STANDARD BAR **B1**



D ADJUSTABLE BAR **B2** (Used on Wood, Metal & Acrylic)

