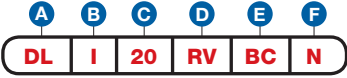


Item Number

To determine your item number enter the **RED** option code for each section as in the example below.



A Lock Style

DL Drawer/Door Lock

B Core Type*

I I.C. Core

C Housing Length/Bolt Type

1-1/16" HOUSING LENGTH (STD.)

- 20** Straight Dead Bolt
- 32** Spring
- 33** Reverse Spring

1-3/8" EXTRA LONG HOUSING

- L20*** Straight Dead Bolt
- L32*** Spring
- L33*** Reverse Spring

New

*Brush Chrome finish only

D Housing Style

RIM SERIES

- RR** Right
- RL** Left
- RI** Inverted*
- RV** Vertical

MORTISE SERIES

- MR** Right
- ML** Left
- MI** Inverted*
- MV** Vertical

E Plating Finish

Extended lead-time and plating lot charges may apply to Special and Custom finishes.

- | | | |
|----------------|-----------|-----------------|
| Special Finish | BC | Brushed Chrome |
| | PC | Polished Chrome |
| | PB | Polished Brass |
| | SB | Satin Brass |
| | BL | Matte Black |
| | CF | Custom Finish |

F Key Retaining

*Option available only on Straight Dead Bolt model.

- N** No
- Y*** Yes

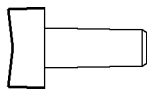
*Cores are not included with this lock. See page I14 to order cores.

*Inverted Straight Dead Bolts are Non Key Retaining only.

PARTS INCLUDED



SPACER FOR 6 PIN CORE



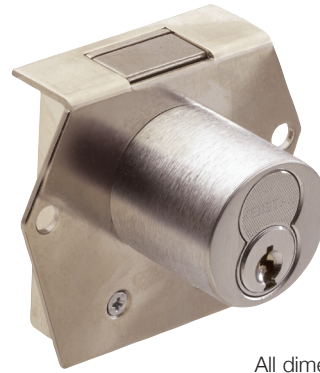
PLASTIC ACTIVATOR 1 included



#8 x 1/2" SCREW (to mount lock)

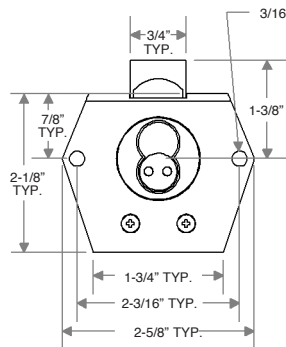


#4 x 5/8" SCREW (to mount strike)

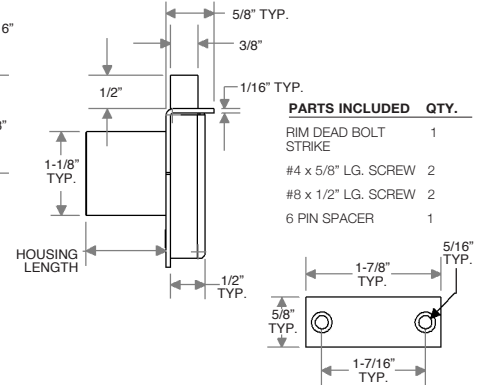


"Throw" (distance bolt travels from the locked to unlocked position) is 1/2". All dimensions shown are in the locked position.

D RIM MOUNT VERTICAL DEAD BOLT

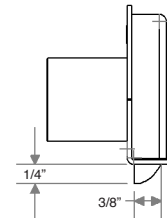
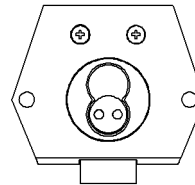


C HOUSING LENGTH



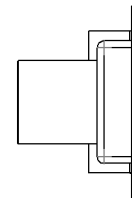
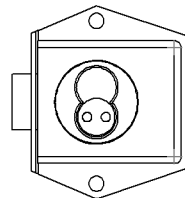
PARTS INCLUDED	QTY.
RIM DEAD BOLT STRIKE	1
#4 x 5/8" LG. SCREW	2
#8 x 1/2" LG. SCREW	2
6 PIN SPACER	1

D RIM MOUNT INVERTED SPRING BOLT



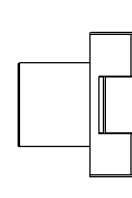
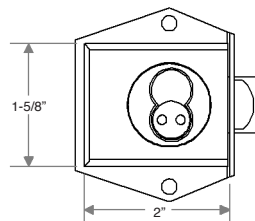
PARTS INCLUDED	QTY.
RIM SPRING BOLT STRIKE	1
#4 x 5/8" LG. SCREW	2
#8 x 1/2" LG. SCREW	2
6 PIN SPACER	1

D MORTISE MOUNT RIGHT SPRING BOLT



PARTS INCLUDED	QTY.
MORTISE SPRING BOLT STRIKE	1
#4 x 5/8" LG. SCREW	2
#8 x 1/2" LG. SCREW	2
6 PIN SPACER	1

D MORTISE MOUNT LEFT DEAD BOLT



PARTS INCLUDED	QTY.
MORTISE DEAD BOLT STRIKE	1
#4 x 5/8" LG. SCREW	2
#8 x 1/2" LG. SCREW	2
6 PIN SPACER	1