



## Item Number

To determine your item number enter the **RED** option code for each section as in the example below.

A	B	C	D	E	F	G	H	I
DL	V	L	3209	PC	Y	Y	Y	N

**A Lock Style**

**DL** Drawer/Door Lock

**B Core Type**

**V** ABLOY® EXEC  
**V3** ABLOY® SENTRY  
**V4** ABLOY® PROTEC

**C Housing Length**

**L** 1-3/16"

**D Bolt Type****STRAIGHT BOLT**

**2001** 1-1/8"  
**2002** 1-3/4"  
**2003** 2-3/8"  
**2004** 3-3/16"

**3/8" OFFSET BOLT**

**2205** 1-11/16"

**DIECAST SPRING BOLT**

**3209** 1-3/8" Std.

**INVERTED SLIDING SPRING BOLT**

**3410** 1-3/8" Left  
**3411** 1-3/8" Right

**E Plating Finish**

Extended lead-time and plating lot charges may apply to Special and Custom finishes.

Special Finish	<b>PC</b>	Polished Chrome
	<b>SC</b>	Satin Chrome
	<b>PB</b>	Polished Brass
	<b>BL</b>	Matte Black
	<b>ST</b>	Statuary Bronze
	<b>CF</b>	Custom Finish

**F Key Retaining**

\*Option available only on Spring Bolt models.

**N\*** No  
**Y** Yes

**G Keyed Different**

**N** No  
**Y** Yes

**H Stamp Lock**

**N** No  
**Y** Yes

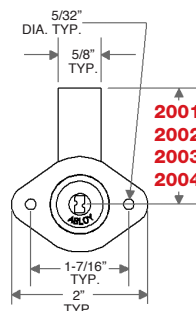
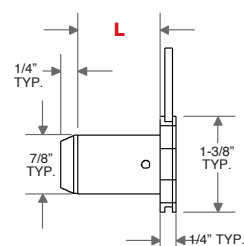
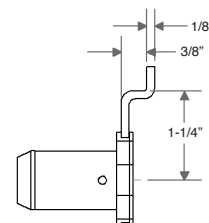
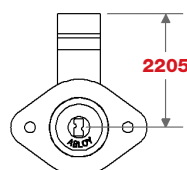
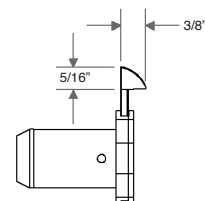
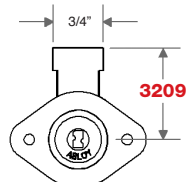
**I Master Keyed**

**N** No  
**Y** Yes  
**G** Grand Master  
**GA** Great Grand Master



Pat. Pending

"Throw" (distance bolt travels from the locked to unlocked position) is 7/16".  
 All dimensions shown are in the locked position.

**D STRAIGHT BOLT****C HOUSING LENGTH****D 3/8" OFFSET BOLT****D DIECAST SPRING BOLT (3/16" bolt engagement recommended)****D INVERTED SLIDING SPRING BOLT**