

Price List and Data Sheet

Item Number

To determine your item number enter the **RED** option code for each section as in the example below.

A	B	C	D	E	F
DL	I	36	RV	BC	N

A Lock Style

DL Drawer/Door Lock

B Core Type*

I I.C. Core

C Bolt Type

36 Snap Bolt

D Housing Style

RIM SERIES
RV Vertical

E Plating Finish

Extended lead-time and plating lot charges may apply to Special and Custom finishes.

Special Finish	BC	Brushed Chrome
	PC	Polished Chrome
	PB	Polished Brass
	SB	Satin Brass
	BL	Matte Black
	CF	Custom Finish

F Key Retaining

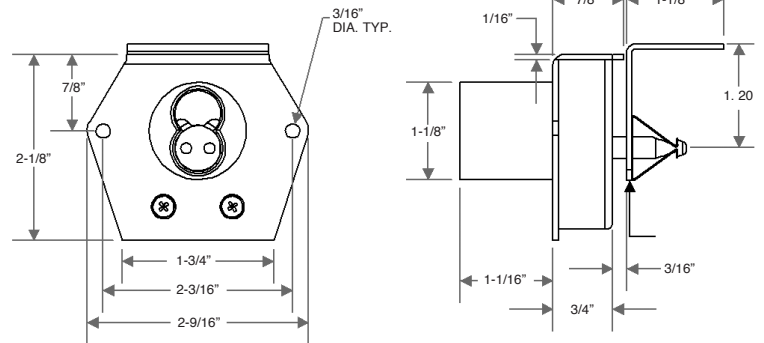
N No

*Cores are not included with this lock.
See page I14 to order cores.



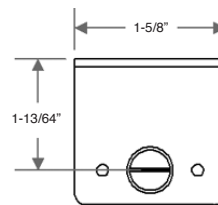
All dimensions shown are in the locked position.

D RIM MOUNT VERTICAL SNAP BOLT

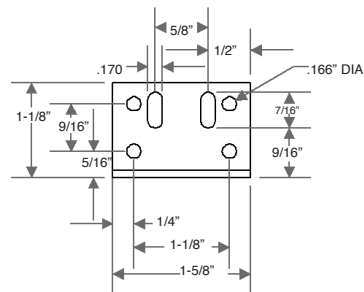


STRIKE FRONT VIEW

STRIKE SIDE VIEW



STRIKE TOP VIEW



ISOMETRIC VIEW

