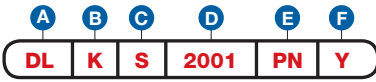


Item Number

 To determine your item number enter the **RED** option code for each section as in the example below.

A Lock Style
DL Drawer/Door Lock

B Core Type
K Keymatic

C Housing Length
S 13/16"
M 1-1/16"
L 1-3/16"

D Bolt Type
STRAIGHT BOLT
2001 1-1/16"
2002 1-11/16"
2003 2-5/16"
2004 3-1/8"

3/8" OFFSET BOLT
2205 1-5/8"

DIECAST SPRING BOLT
3209 1-5/16" Std.

INVERTED SLIDING SPRING BOLT
3410 1-5/16" Left
3411 1-5/16" Right

E Plating Finish

 Extended lead-time and plating lot charges **may** apply to Special and Custom finishes.

Special Finish	PN	Polished Nickel
	SN	Satin Nickel
	PB	Polished Brass
	SB	Satin Brass
	BL	Matte Black
	ST	Statuary Bronze
	CF	Custom Finish

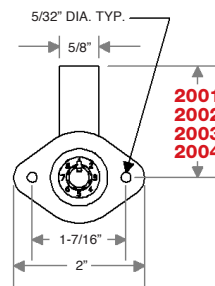
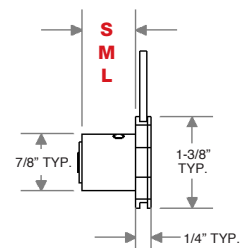
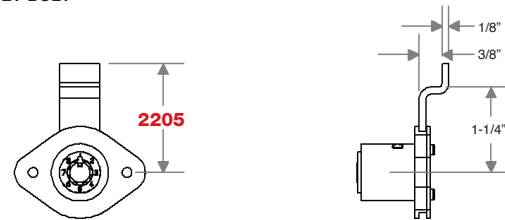
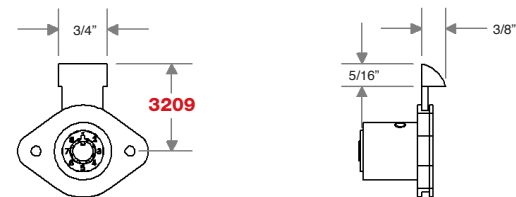
F Key Retaining

* Option available only on Straight Bolt and 3/8" Offset Bolt models.

N No
Y* Yes

Note: Keys are not included with this lock. See page K14 to order keys.

 "Throw" (distance bolt travels from the locked to unlocked position) is 5/16".
 All dimensions shown are in the locked position.

D STRAIGHT BOLT

C HOUSING LENGTH

D 3/8\"/>
D DIECAST SPRING BOLT (3/16\"/>
D INVERTED SLIDING SPRING BOLT
