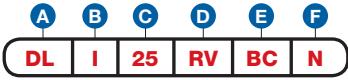


Price List and Data Sheet

Item Number

To determine your item number enter the **RED** option code for each section as in the example below.



A Lock Style
DL Drawer/Door Lock

B Core Type*
I I.C. Core

C Housing Length/Bolt Type
1-1/4" HOUSING LENGTH (STD.)
25 Dead Bolt
1-3/8" EXTRA LONG HOUSING
New **L25*** Dead Bolt
**Brush Chrome finish only*

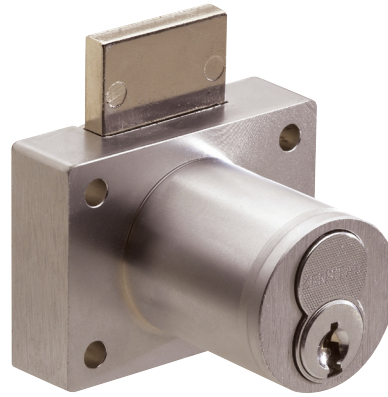
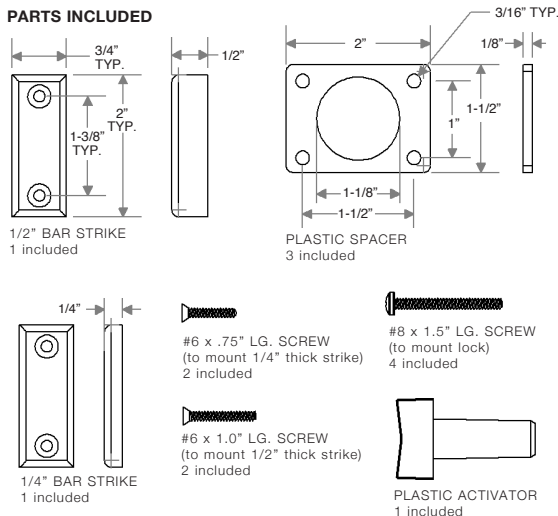
D Housing Style
RIM SERIES
RR Right
RL Left
RI Inverted
RV Vertical

E Plating Finish
Extended lead-time and plating lot charges may apply to Special and Custom finishes.

Special Finish	BC	Brushed Chrome
	PC	Polished Chrome
	PB	Polished Brass
	BL	Matte Black
	CF	Custom Finish

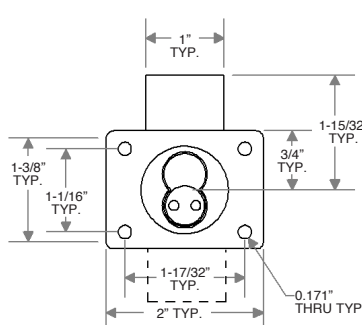
F Key Retaining
N No
Y Yes

*Cores are not included with this lock.
See page I14 to order cores.

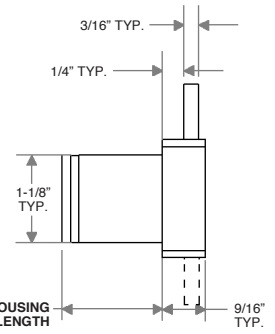


"Throw" (distance bolt travels from the locked to unlocked position) is 23/32".
All dimensions shown are in the locked position.

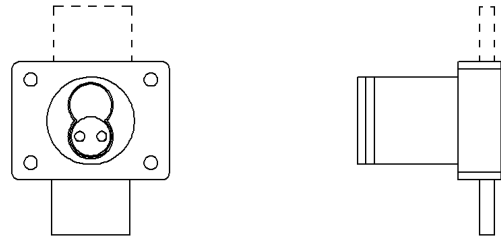
D VERTICAL



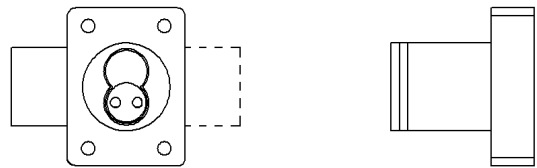
C HOUSING LENGTH



D INVERTED



D RIGHT



D LEFT

