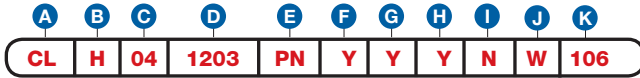


Item Number

To determine your item number enter the **RED** option code for each section as in the example below.



A Lock Style

CL Cam Lock

B Core Type

M Medeco® Biaxial
H Medeco® Biaxial m³
R Medeco® Biaxial - Removable Core
G Medeco® Biaxial m³ - Removable Core

C Housing Length

MAXIMUM MATERIAL THICKNESS

	WOOD	METAL	GLASS	BARREL LENGTH
02	-	3/8"	1/4"	1 1/16"
03	1/2"	9/16"	7/16"	7/8"
04*	13/16"	7/8"	3/4"	1-1/8"
05	1-3/16"	1-1/4"	1-1/8"	1-1/2"
10	1-9/16"	-	-	1-3/4"
11	1-7/8"	-	-	2"
12	2-1/4"	-	-	2-3/8"
13	2-1/2"	-	-	2-3/4"
14	2-3/4"	-	-	3"
15	3-1/8"	-	-	3-3/8"

D Cam Rotation

	LOCKED	OPEN	LOCKED	OPEN
0312	3	12	0912 9	12
0306	3	6	0903 9	3
0309	3	9	0906 9	6
0612	6	12	1203 12	3
0603	6	3	1206 12	6
0609	6	9	1209 12	9

E Plating Finish

Extended lead-time and plating lot charges may apply to Special and Custom finishes.

Special Finish	Code	Description
	PN	Polished Nickel w/Satin Chrome Core
	PB	Polished Brass
	SB	Satin Brass
	BL	Matte Black
	ST	Statuary Bronze
	CF	Custom Finish

F Key Retaining

N* No
Y Yes

G Keyed Different

N No
Y Yes

H Stamp Lock

N No
Y Yes

I Master Keyed

N No
Y Yes
G Grand Master

J Material Installation

W Wood
M Metal
GR Glass with Round Hole
GD Glass with Double "D" Hole
O Other - No Mounting Hardware



Note: All Cam Locks come with a 1-1/4" Straight Cam unless a different cam is chosen.

K Cam Type

STRAIGHT

101	5/8"
102	3/4"
103	7/8"
104	1"
105	1-1/8"
106	1-1/4"
107	1-3/8"
108	1-1/2"
110	1-3/4"
112	2"
116	2-1/2"

1/8" OFFSET

303	7/8"
306	1-1/4"
308	1-1/2"
312	2"

1/4" OFFSET

403	7/8"
404	1"
406	1-1/4"
408	1-1/2"
410	1-3/4"
412	2"
414	2-1/4"

3/8" OFFSET

504	1"
506	1-1/4"
508	1-1/2"
512	2"

1/2" OFFSET

606	1-1/4"
608	1-1/2"
610	1-3/4"
612	2"

5/8" OFFSET

712	2"
------------	----

HOOK

202	3/4"
204	1"
206	1-1/4"
208	1-1/2"
210	1-3/4"

PIN CAM

P604 9/16" offset

FOR SWITCH KIT

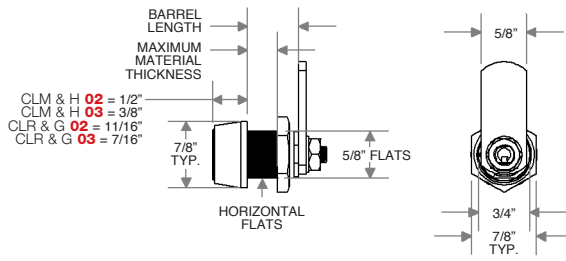
SL No Cam*

*Switch option available. See Page A10 to order switch kit.

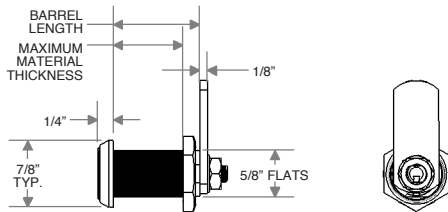
Continued



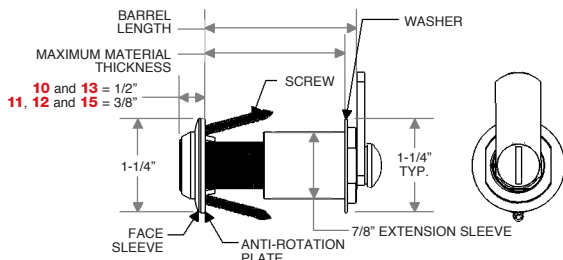
HOUSING LENGTHS 02 and 03



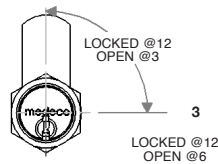
HOUSING LENGTH 04 and 05



HOUSING LENGTHS 10, 11, 12, 13, 14 and 15

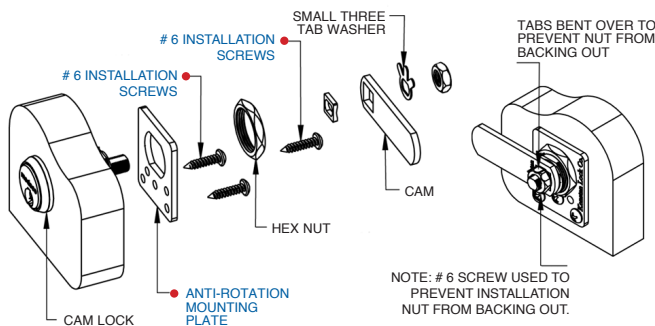


CAM ROTATIONS EXAMPLE

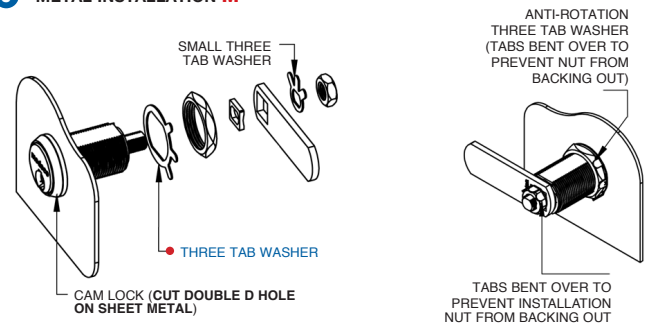


All non-key retaining 90 degree rotations are custom - call Kenstan.
All 180 degree rotations are clockwise, unless specified.

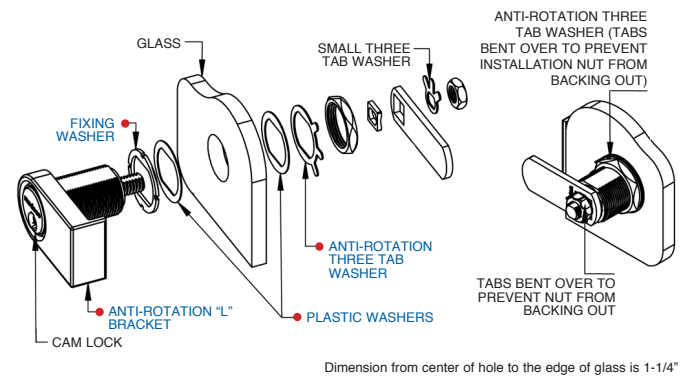
J WOOD INSTALLATION W



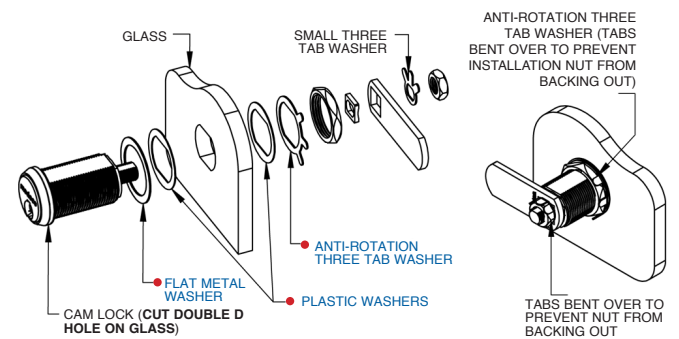
J METAL INSTALLATION M



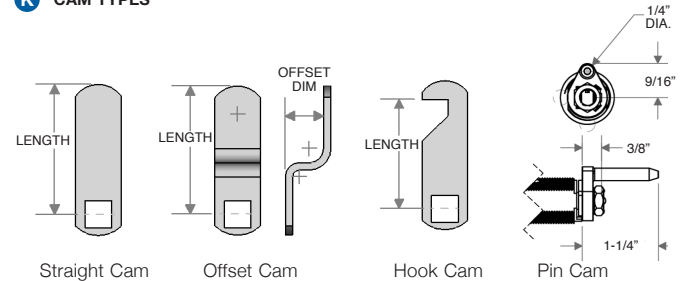
J GLASS INSTALLATION - ROUND HOLE GR



J GLASS INSTALLATION - DOUBLE D HOLE GD



K CAM TYPES



Note: All Offset cams are reversible.