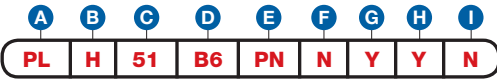


Data Sheet

To determine your item number enter the **RED** option code for each section as in the example below.



A Lock Style
PL Plunger Lock

B Core Type
M Medeco® Biaxial
H Medeco® Biaxial m³

C Housing Style
51 Key Hole Lock

D Material Thickness/Plunger

	MATERIAL THICKNESS	PLUNGER LENGTH
SHORT BACK 1.20		
B3	1/4"	3/4" Std
B4	3/8"	5/8"
LONG BACK 2.08		
B6	1/4"	1-1/2" Std
B7	3/8"	1-3/8"
B8	7/8"	1-1/32"

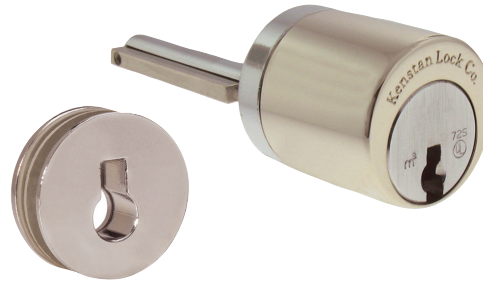
E Plating Finish
PN Polished Nickel w/Satin Chrome Core
PB Polished Brass
SB Satin Brass
BL Matte Black
ST Statuary Bronze
CF Custom Finish

F Key Retaining
N No
Y Yes

G Keyed Different
N No
Y Yes

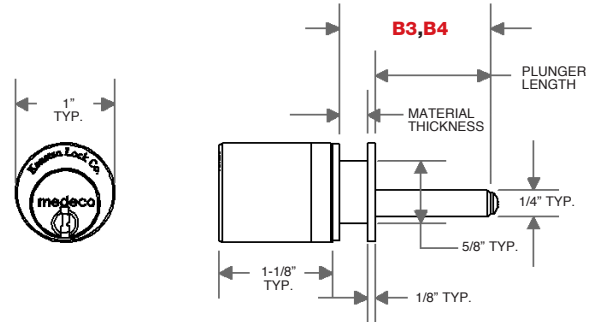
H Stamp Lock
N No
Y Yes

I Master Keyed
N No
Y Yes
G Grand Master

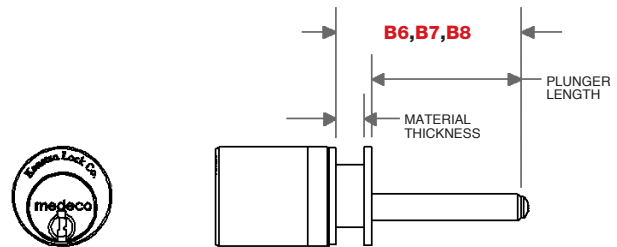


All dimensions shown are in the locked position.

D SHORT PLUNGER



D LONG PLUNGER



KEY HOLE LOCK - EXPLODED VIEW

