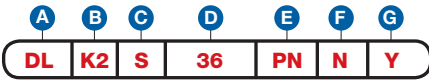


Item Number

To determine your item number enter the **RED** option code for each section as in the example below.



A Lock Style

DL Drawer/Door Lock

B Core Type

K2 K² Keymatic Pull

C Housing Length/Style

STANDARD

S 13/16"
M 1-1/16"
L 1-3/16"

LOW PROFILE

SL 13/16"
ML 1-1/16"
LL 1-3/16"

D Bolt Type

SNAP BOLT

36 3/4"

E Plating Finish

Extended lead-time and plating lot charges may apply to Special and Custom finishes.

Special Finish	PN	Polished Nickel
	SN	Satin Nickel
	PB	Polished Brass
	SB	Satin Brass
	BL	Matte Black
	ST	Statuary Bronze
	CF	Custom Finish

F Key Retaining

N No

G Insert Core

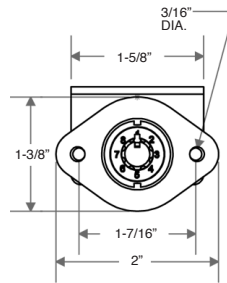
Y Yes
N Pack Core Separately
ND Ship Core to Different Location

Note: Keys are not included with this lock. See page 17 to order keys.

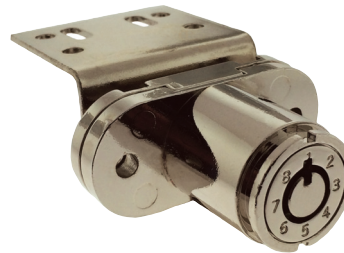
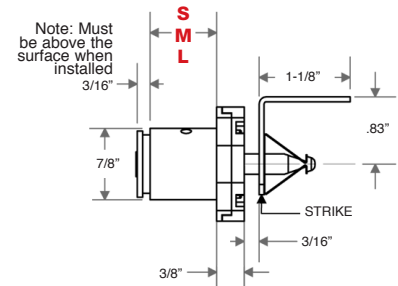


All dimensions shown are in the locked position.

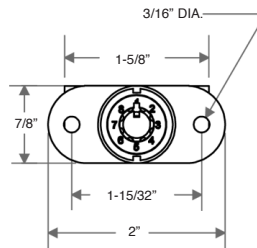
D STANDARD SNAP BOLT



C HOUSING LENGTH



D LOW PROFILE SNAP BOLT



C HOUSING LENGTH

